

# WHO WE ARE

## Neighbors Helping Neighbors...

For more than 85 years, with the help of 150 volunteers, and over 3,000 donors **UWHCM drives change by providing community-elected funding to local agencies who implement community programs with measurable, lasting solutions.** This secures the long-term advancement of education, financial stability and healthy living for all in Martinsville and Henry County, Virginia.

## Your Gift. Your Choice...

We invest your contribution into our volunteer-vetted **Community Impact Grants.** Funding decisions for these grants are made through an annual competitive process overseen by our **Community Investment Review Panel.** This diverse group of 20-30 volunteers ensures United Way's investment with your contribution has the **greatest local impact** in our core areas of need.

Alternatively, you can choose to designate any amount of your gift to one of our 25 locally-partnered agencies.



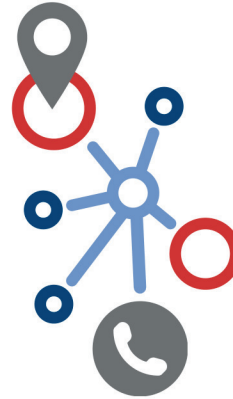
Scan the Code to Learn More

## Our Promise...

We win when we LIVE UNITED. By forging unlikely partnerships. By finding new solutions to old problems. By mobilizing the best resources, and by inspiring individuals to join the fight against their community's most daunting social crises.

# VISIT US

149 E Main Street  
Martinsville, VA 24112  
Public Parking at  
145 E Main St



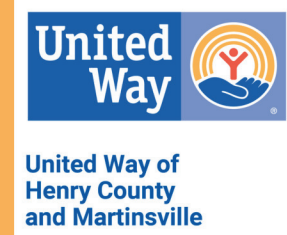
# CONTACT US

**Rebecca Center**  
WP Engagement / Donor Services Coordinator  
276-638-3946 x110  
www.UnitedWayofHCM.org  
rebecca@unitedwayofhcm.org

# LOCAL SOLUTIONS

## Our In-House Programs...

-  **Education**
  - Dolly Parton's Imagination Library
  - MHC Partners for Children  
*(formerly known as Smart Beginnings)*
-  **Financial Stability**
  - Bank On
  - Bridges Out of Poverty
  - Dollars and Sense Reality Fair
  - Getting Ahead in a Just Getting By World
  - Housing Stabilization Program (VERP)
  - Virginia Individual Development Accounts (VIDA)
  - Volunteer Income Tax Assistance (VITA) Program
-  **Healthy Living**
  - Community Health Workers
  - Martinsville-Henry County Assistance Network



*Thank you* for choosing to  
**LIVE UNITED** in Henry County  
& Martinsville, VA

**GIVE. ADVOCATE. VOLUNTEER.**  
**#LIVE UNITED**

# YOU CAN HELP

**Join our Fight...** When we work together, even modest contributions have a strong impact toward local advancement.

Donor Name(s) \_\_\_\_\_

Mailing Address \_\_\_\_\_

Email \_\_\_\_\_

Phone Number:  Home  Mobile

May we text you? (SMS):  Yes  No

Preferred Contact Method(s):  Email  US Mail  Phone

I/We pledge \$\_\_\_\_\_ to the United Way Campaign.

I/We pledge to sponsor local children to receive FREE books through *Dolly Parton's Imagination Library*.

Total number of children to sponsor \_\_\_\_\_ (\$27/per child)

Please designate \$\_\_\_\_\_ to \_\_\_\_\_ (see agency codes above)

I am/We are interested in your Volunteer Opportunities

Preferred Contact Method(s):  
 Email  US Mail  Phone

Total Pledge Amount= \$ \_\_\_\_\_

Signature: \_\_\_\_\_

I would prefer my contribution to remain anonymous

# AGENCY DESIGNATION CODES

ARC - American Red Cross

ANC - Anchor Commission

BRS - Bassett Rescue Squad

BSA - Boy Scouts

BGC - Boys & Girls Club

CDC - Community Dream Center

EAD - Edwards Adult Day Care

FMY - Family YMCA

FCR - Fieldale-Collinsville Rescue Squad

FOY - FOCUS on Youth

FIA - Friends of Infinity Acres Ranch

GSS - Girl Scouts

GNW - Grace Network

HFP - Henry County Food Pantry

HRS - Horsepasture Rescue Squad

PCS - Piedmont Community Services

RRS - Ridgeway Rescue Squad

SAM - Salvation Army

SSR - Southside Survivor RC

STP - STEP, Inc.

SSS - Stepping Stones

VLA - Virginia Legal Aid Society

**OYW - Other United Way\***

*\*Please Specify OYW Location*

## Giving Options

Enclosed is my / our check for

\$ \_\_\_\_\_

Please **Bill Me** Via:  Email  US Mail

I would like to be billed:  One Time  Quarterly

First Billing Date: \_\_\_\_ / \_\_\_\_ / \_\_\_\_  
MM / DD / YYYY

I / we will be paying by credit card.

Go to "www.UnitedWayofHCM.org" Click "Donate"

I / we give year-round through UWHCM Round-Up

Go to "www.UnitedWayofHCM.org", Click "Donate"  
Select "Round-Ups" Option

My employer participates in company matching

*Please contact your employer for appropriate documentation as documented company matches are added to your pledge total.*

